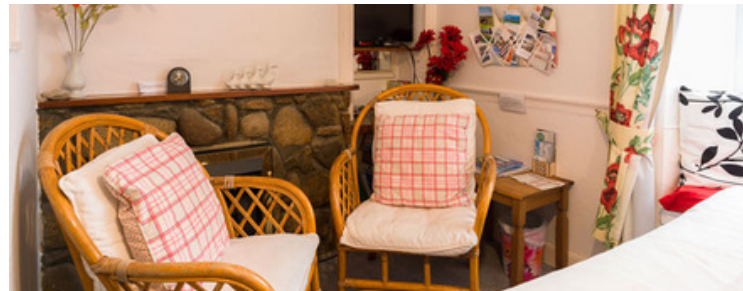




Lifeboat View

Smuggler's Ride, Thorofare, St Mary's,

TR21 0LN

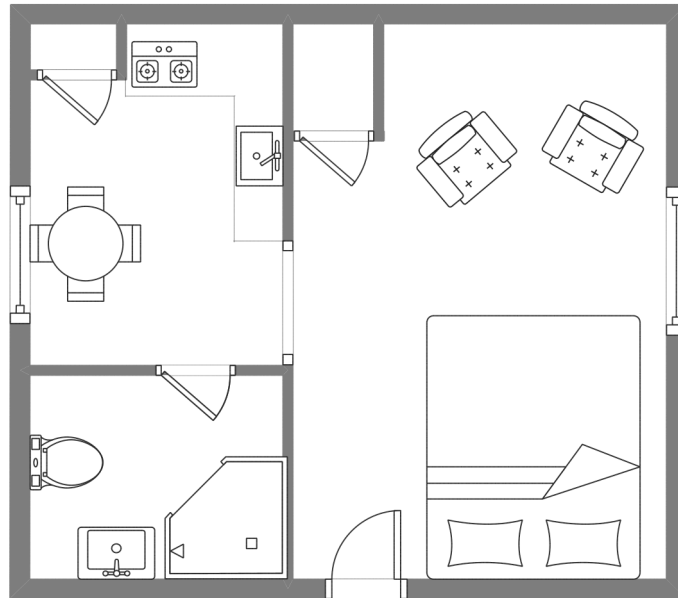


Sleeps 2 | Saturday Change over

- Double Arrangement
- Internet Access
- Ideal for the solo traveller
- Laundry Facility
- Sea Views
- Town centre location

Lifeboat View is a studio apartment on the ground floor of Smugglers Ride, an impressive granite building located on Town Beach, which was once a guest house and has subsequently been converted into self-catering apartments. The living area makes maximum use of the space available and comprises a bed-sitting room, with a feature window seat, a dining kitchen with a splendid view of the harbour, and of course the lifeboat at anchor, and a shower room. Sleeping two in a sofa bed, this flat is also very well suited to the solo traveller. Situated on The Thorofare, a quiet lane running almost parallel to the main street in Hugh Town, Lifeboat View is within a short walk of most island amenities.

Layout



Getting to the property

Map of St Marys



Directions from the Quay | Walking time: 5 minutes

Head towards the entrance to the quay
Turn left at The Mermaid Inn on to Hugh Street
Keep to the left side of the road
Go as far as the IOS Steamship Co. office

Turn left into the alley
At the bottom of the alley turn right
The entrance to Smugglers Ride is on the left
Lifeboat View is on the ground floor

What3words///inhaled.hoops.chairing

Scilly Self Catering
Lower Strand
Isles of Scilly, TR21 0PS

Enquiries@scillyselfcatering.com
01720 422082
www.scillyselfcatering.com